

When She Thrives,
We All Do



Cause *We* Care
FOUNDATION

Impact Report

When She Thrives, *We All Do*

Supporting a mother doesn't just change her life.
It changes everything around her.

Her child.
Her home.
Her future.
Her community.



Nearly 20 years ago, Cause We Care began with a simple but urgent belief: *single mothers and their children deserve more*. More opportunity. More stability. More support to build lives of dignity and independence.

Over the years, I have seen firsthand the strength and resilience of the women we serve, and the powerful difference that targeted, thoughtful investment can make. When we support single mothers, we are not only helping families meet immediate needs. We are investing in brighter futures for children and stronger communities across the Lower Mainland.

As the need grows, so too does our responsibility to lead. Cause We Care is stepping forward not only as a funder, but as a trusted voice with frontline insight, and deep community relationships. We are committed to stewarding donor support with care, integrity, and impact, and to working alongside partners who share our belief that lasting change is possible.

Thank you to our donors, partners, and community for standing with us. Together, we are helping single mothers build the futures they and their children deserve.

ANDREA THOMAS HILL
FOUNDER & CHAIR

In 2025, Cause We Care continued to respond to growing need with disciplined investment and strong partnerships. With the support of our donors and community, we expanded our reach and deepened our impact, supporting more single mothers and children across the Lower Mainland than ever before.

Through our Community Grants, we proudly partnered with 26 frontline organizations, helping them to deliver a range of essential supports for single mothers and their families. Our Single Mothers Support Fund provided direct financial assistance to women pursuing education and vocational training, with outcomes demonstrating meaningful progress in economic security, well-being, and opportunities for their children. Our Holiday Care Package Drive once again delivered timely, tangible support to families during a critical time of year.

Behind these outcomes is a thoughtful and accountable approach to funding. We work closely with partners, assess impact, and direct resources where they can make the greatest difference to single mothers in our community. As we grow, we remain committed to transparency and strong stewardship of donor funds to ensure our investments deliver lasting value.

I am deeply grateful to our donors, volunteers, partners, staff and Board for their trust and commitment. Your support makes this work possible, and your investment is improving lives across our community every day.

SHANNON NEWMAN-BENNETT
EXECUTIVE DIRECTOR

When She Thrives, *We All Do*

For nearly

20 years

CWC has invested in single mothers and their children to build economic security, strengthen families, and improve outcomes for communities in the Lower Mainland.

Mission

Investing in single mothers to build well being and economic security for themselves and their children.



Cause We Care
FOUNDATION

Why We Care



1 in 5 families with children in BC are one-parent families.



80% of these are led by women:
more than 100,000 families.



Almost half of these children live in poverty.

Cause We Care exists to close the gap between survival and stability for single mothers and their families.

Funds Raised

Over the past 5 years, Cause We Care has been focused on growing our donor base and increasing revenues to support our strategic investments in single mother-led families.

In 2025, revenue growth continued year-over-year, enabling us to invest over

\$1.2 million

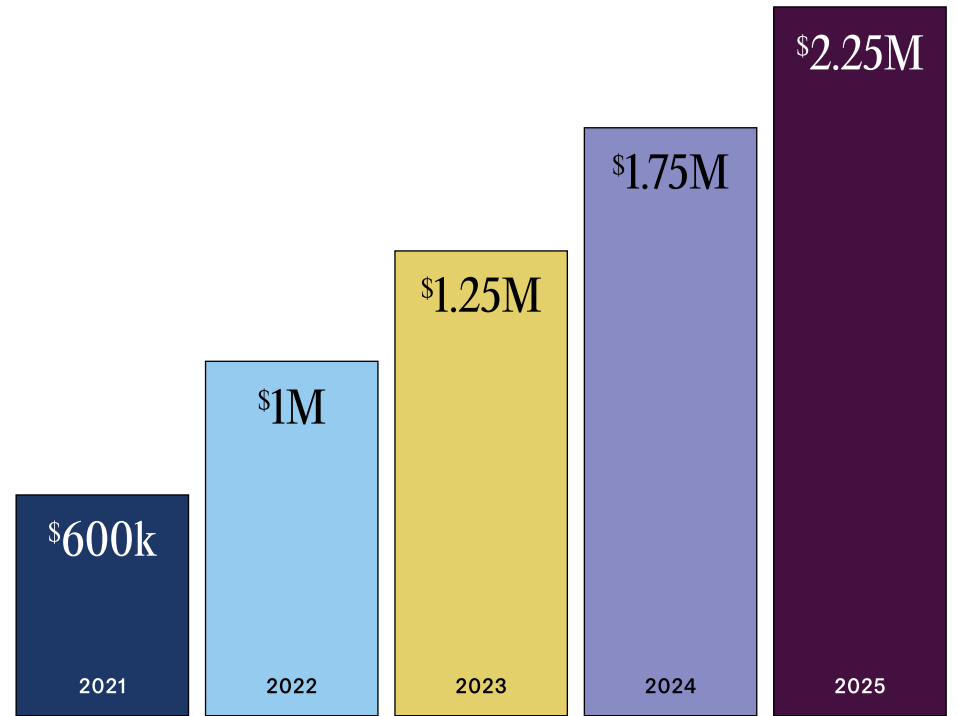
directly into programs supporting single mothers.

We are grateful to our network of donors for giving generously and helping to deepen the impact we are having in the lives of these families.

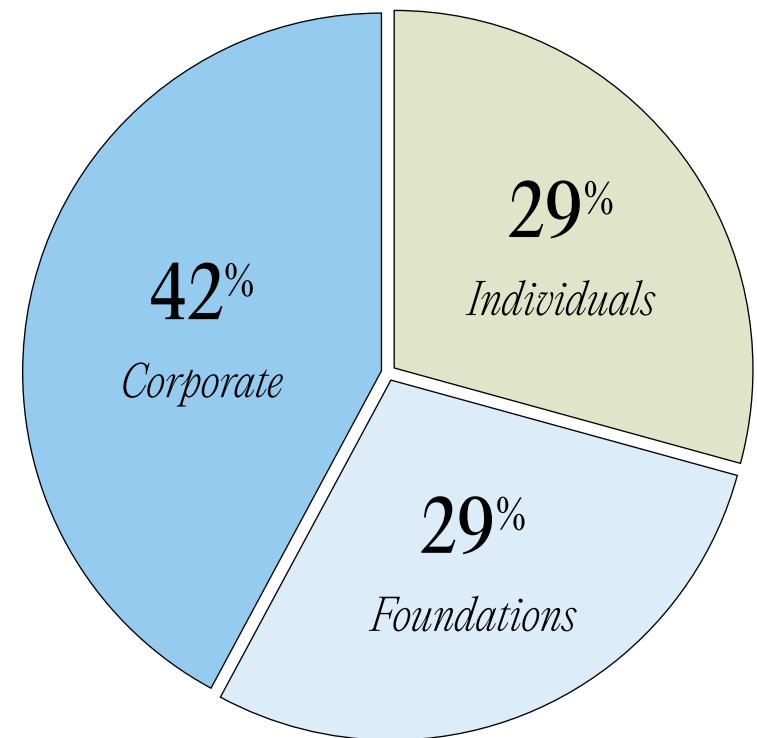




FUNDS RAISED FROM 2021-2025



DONOR TYPE



Our Investments

INVESTMENTS

In 2025, Cause We Care invested over \$1.2 million in single mothers in our community. Our investments are focused on three measurable outcomes:

Improved Economic Security

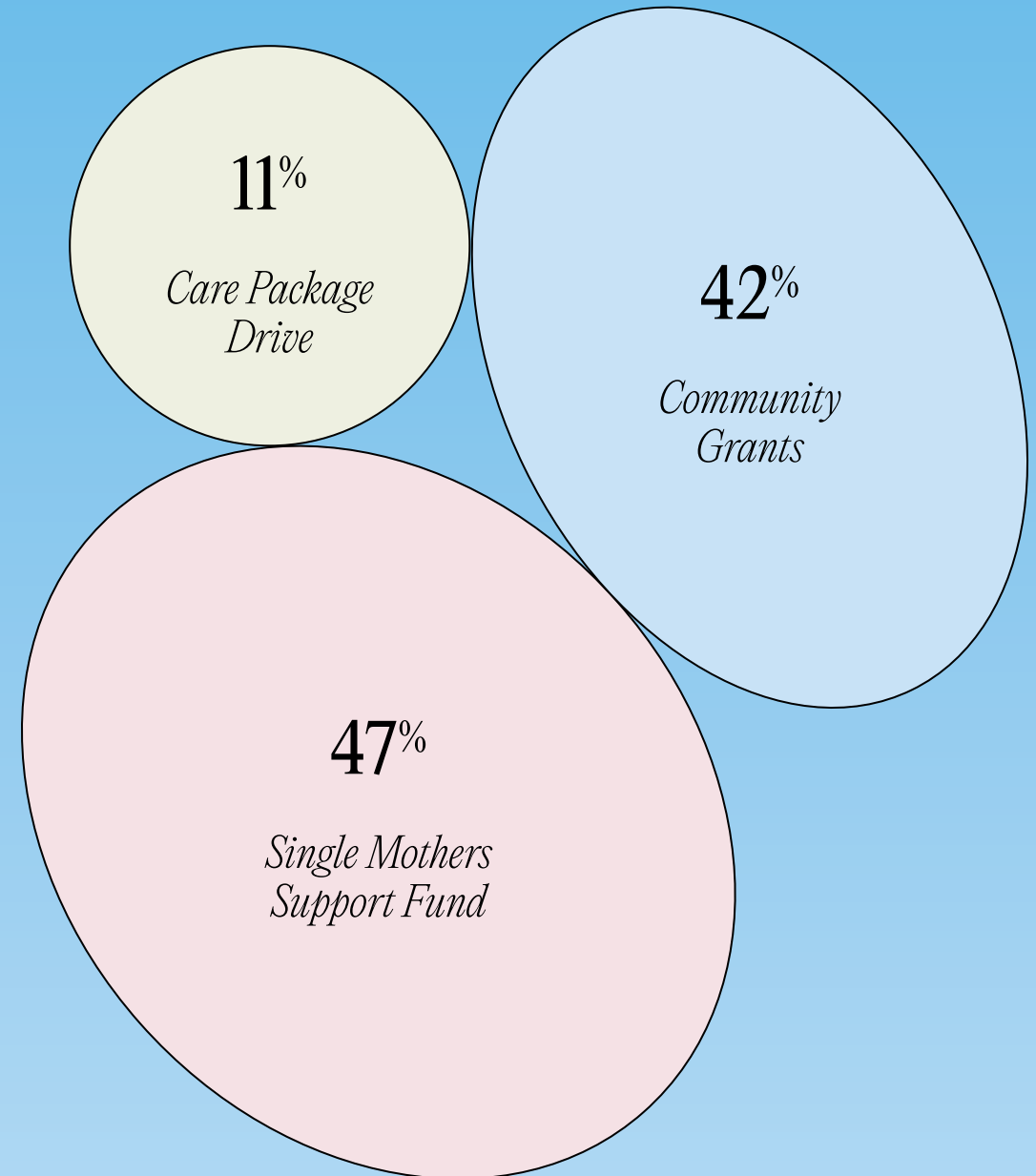
Specifically improvements in housing, employment, and financial means.

Improved Personal Capacity

Encompassing improvements in education, mental health, and support networks.

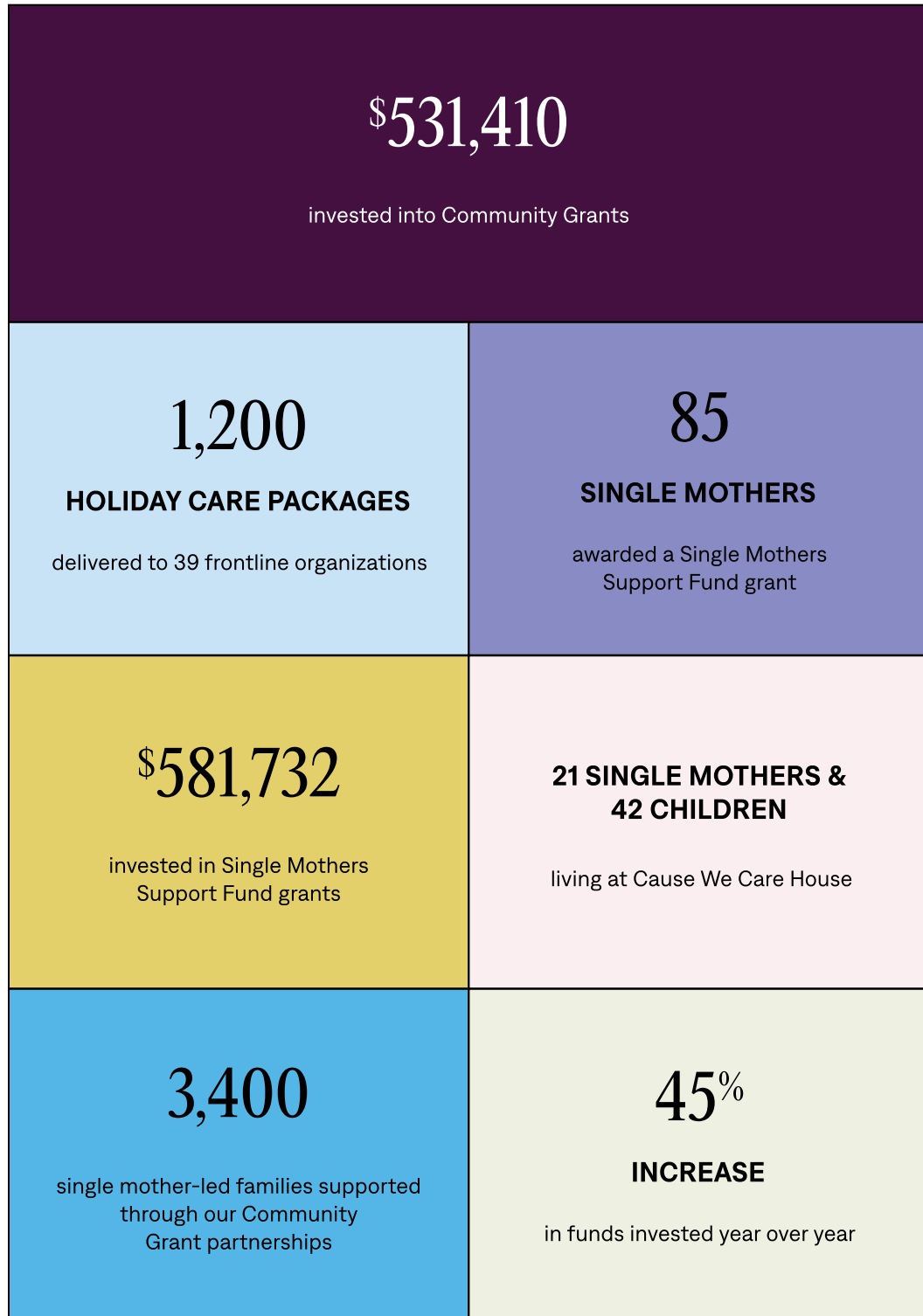
Increased Opportunities for Children

Notably improvements in access to relevant programs and services.



Our Impact by the Numbers

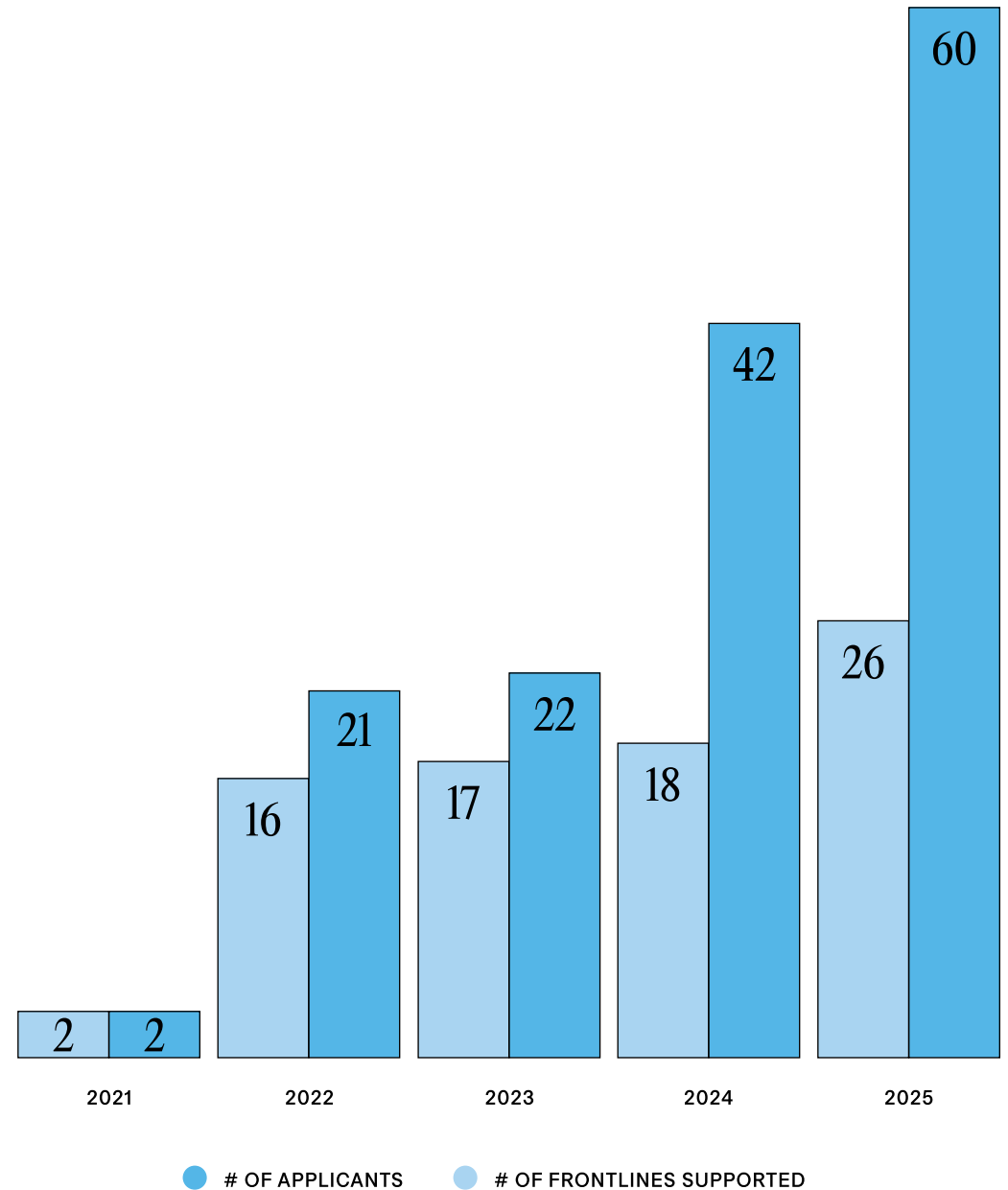
Community Grants distributed to 26 frontline organizations:



Community Grants

Our Community Grant stream is a key tactic to ensure our funding responsively addresses the full spectrum of needs of single mothers in our community. We grant up to \$30,000 each to frontline organizations providing services to single mothers, from childcare to counselling to employment, harnessing their knowledge of local needs and how to address them.

COMMUNITY GRANTS GROWTH FROM 2021-2025



A total of
\$531,410

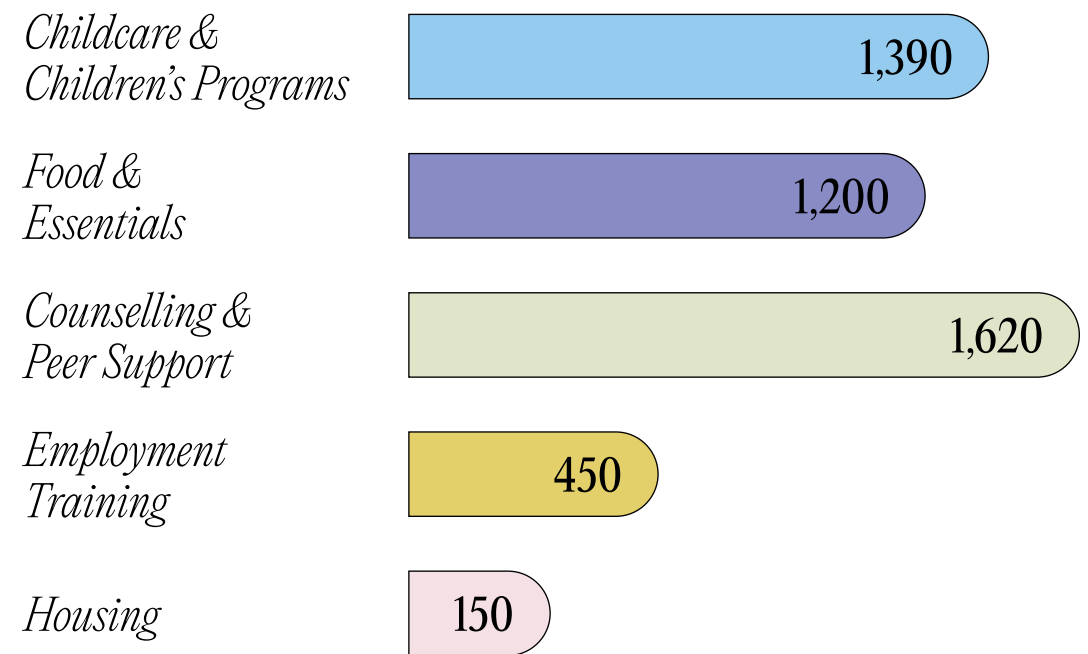
was awarded to the following 26 frontline organizations in 2025:

- | | |
|--|--|
| Ann Davis Transition Society | North Shore Crisis |
| Aunt Leah's Place | North Shore Women's Centre Society |
| British Columbia Hospitality Foundation | Pacific Post Partum Support Society |
| Cythera Transition House Society | PALS Autism |
| Dress For Success | PearlSpace Support Services Society |
| Family Services of Greater Vancouver | Potluck Café Society |
| First Call Child & Youth Advocacy Society | Progressive Intercultural Community Services Society |
| Fraser Valley Health Care Foundation | Promise Vancouver |
| Gordon Neighbourhood House | SARA for Women Society |
| Learning Disabilities Society of Greater Vancouver | Shelter Movers |
| Mamas for Mamas | YWCA Cause We Care House |
| Marpole Oakridge Family Place | YWCA Metro Vancouver |
| Mom2Mom | |
| Muslim Food Bank and Community Services Society | |

Over
3,400

single mother-led families were supported through these partnerships. Programs provided support across a wide spectrum of needs:

SUPPORT PROGRAMS FOR SINGLE MOTHER-LED FAMILIES



○ # OF SINGLE MOTHER-LED FAMILIES SERVED

Community Grant Highlight:

Learning Disabilities Society

We were proud to partner with LDS to fund the Cause We Care Single Mothers Bursary Fund, which offered substantial partial bursaries to 84 single mothers seeking support for their children with suspected or diagnosed learning differences. The children supported received in-depth assessments, individualized one-to-one instruction, intensive intervention, social skills development, family coaching, peer mentorship, and when applicable, pre-employment training.

Single Mothers Support Fund

The Cause We Care Single Mothers Support Fund (SMSF) provides grants to low-income single mothers who are pursuing further education or vocational training in an effort to improve their earning potential and economic security. This program has grown exponentially since its launch in 2020.

In 2025,

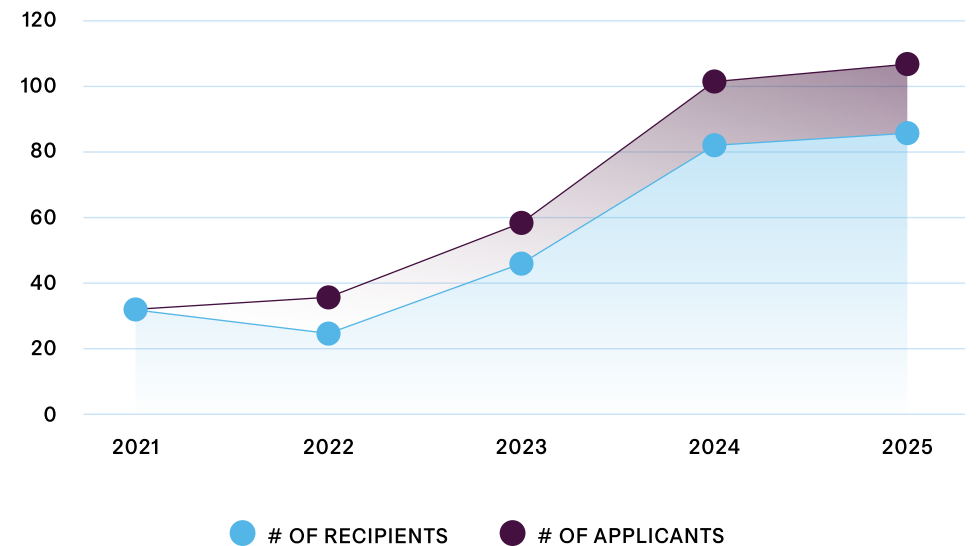
85

single mothers received a SMSF grant with a total of

\$581,732

invested in their futures.

SMSF GROWTH FROM 2021-2025



IMPACT OUR INVESTMENTS HAVE MADE IN
THE LIVES OF THESE WOMEN:

97% *Progressed toward educational goals*

68%* *Improved financial security*

*64% remain enrolled one year post-funding

90% *Improved connections to community*

89% *Improved opportunities / well being
for her children*

97% *Improved self-esteem*

97% *Increased hopefulness*

*My hopes & dreams came
true from the SMSF that
I received. It has also
afforded me to dream bigger,
not to lose faith in life,
to be self-dependent & reliant.*

— Vivian, SMSF Speaker



Holiday Care Package Drive 2025

Cause We Care, along with our generous donors and corporate partners, has delivered care packages to fill the needs of vulnerable families in the Lower Mainland for the past 19 years. With over 13,000 care packages delivered to date, the Holiday Care Package Drive is the largest targeted hamper initiative supporting single mother-led families in the city. In December 2025, we supplied 1,200 single mother-led families with a new backpack filled with a \$100 grocery gift card, groceries, warm winter accessories and some sweet treats for the family to enjoy.

19th annual Holiday Care Package Drive

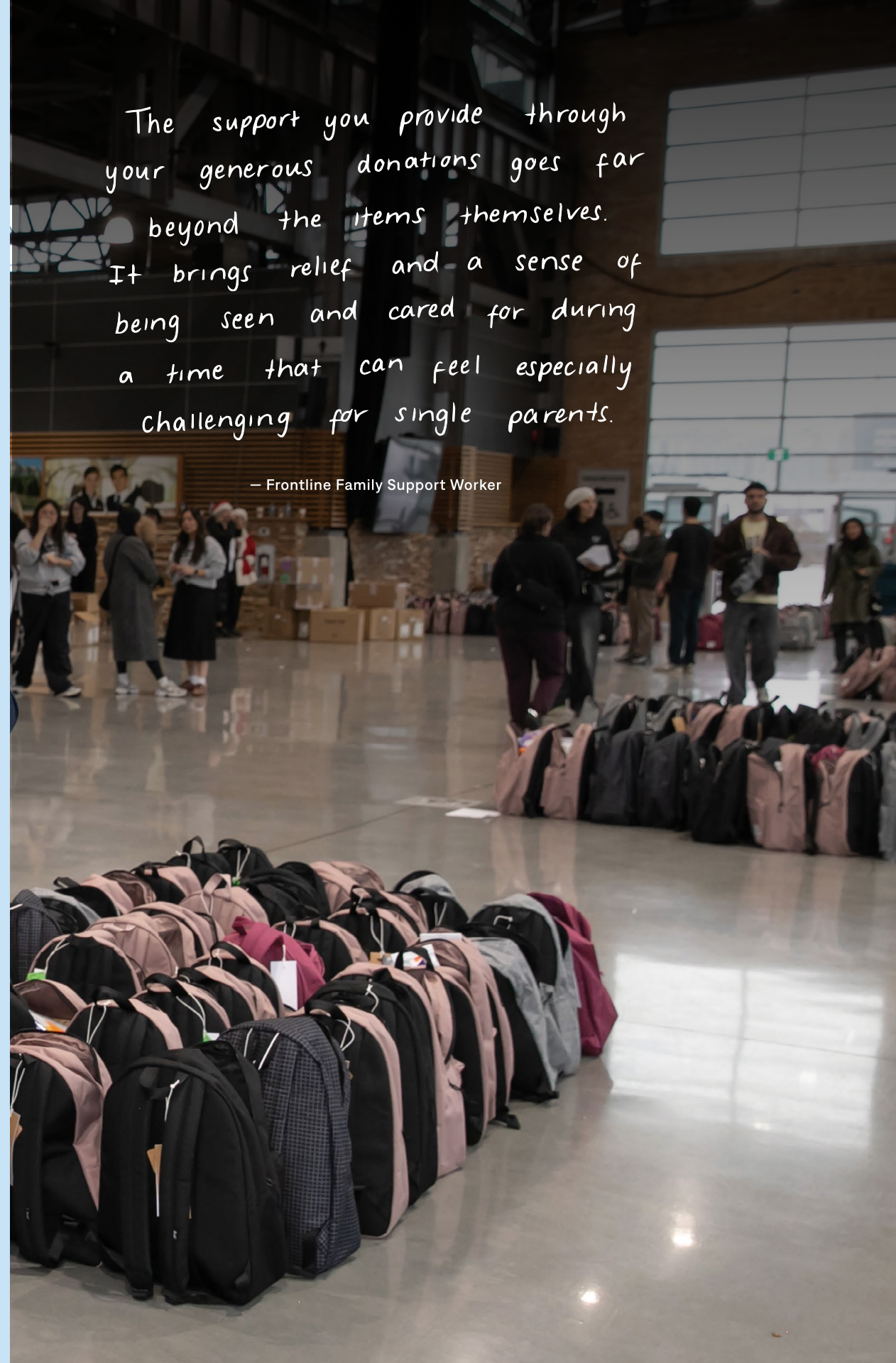
1,200 care packages distributed

39 frontline organizations supported

31 Corporate Champion partners helping to fund & supply the care packages

The support you provide through your generous donations goes far beyond the items themselves. It brings relief and a sense of being seen and cared for during a time that can feel especially challenging for single parents.

— Frontline Family Support Worker



Cause We Care House


Cause We Care House, operated by YWCA Metro Vancouver, provides safe and affordable housing to 21 single mothers and 42 children in the Downtown Eastside, offering a stable foundation for families working toward greater independence.

Residents also have access to free on-site employment programming, including Employment Navigator, which connects women to pre-employment resources and education; Higher Ground, which supports pathways into the skilled trades; and Health Connect, which helps newcomer women pursue their health credentials in Canada.

Frontline Organizations We Support

Act2 Safe Choice	North Shore Family Services
Ann Davis Transition Society	North Shore Neighbourhood House
Aunt Leah's Place	North Shore Women's Centre
BabyGoRound	PALS Autism
Britannia Elementary	Queen Alex Elementary
Britannia Secondary	Ray-Cam Community Centre (NICCSS)
Collingwood Neighbourhood House	Pacific Post Partum Support Society
Cythera Transition House Society	PearlSpace Support Services Society
Developmental Disabilities Association (DDA)	Potluck Café Society
Dixon Transition Society	Progressive Intercultural Community Services Society
Dress For Success	Promise Vancouver
First Call Child & Youth Advocacy Society	Seymour Elementary
Fraser Health	SARA for Women Society
Grandview Elementary	Shelter Movers
Hastings Elementary School	Spectrum Mother's Support Society
Jewish Family Services	Strathcona Elementary
Kate Booth House & Esther's Place	Thunderbird Elementary
Learning Disabilities Society of Greater Vancouver	Tillicum Annex Elementary School
Mamas for Mamas	Van Tech Secondary
Marpole Family Place	Waverley Elementary
Mom2Mom	Xpey Elementary School
Muslim Food Bank and Community Services Society	YWCA - Cause We Care House
Nelson Elementary	YWCA - Crabtree Corner
North Shore Crisis Service Society	YWCA - Single Mother Service Vancouver



A black and white photograph of a woman holding a baby. The woman is in the foreground, looking down at the baby. Another person's face is visible in the background, slightly out of focus. The overall mood is intimate and tender.

The wellbeing of a mother doesn't exist in isolation, it shapes the stability, health, and future of everything around her. When she is supported, that impact ripples outward, strengthening not just one life, but entire families and communities.

When mothers thrive,
we all do.

2025 Donors

Through their ongoing leadership support, Andrea and Brian Hill fully fund Cause We Care's administrative expenses. This extraordinary commitment allows 100% of donor contributions to flow directly to programs serving single mothers, maximizing impact and strengthening trust in every investment made.

Legacy *\$100,000 +*

Adam & Katelyn Lundin
Aritzia LP
ARON Charitable Foundation
Blue Ruby Jewellery
Capital Direct Lending Corp.

Empowerment *\$50,000 +*

Golf For Good Tournament
Herschel Supply Company Ltd.
Peter & Joanne Brown Foundation
Royal Bank Of Canada

Visionary *\$25,000 +*

Connor, Clark & Lunn Foundation
Fred and Judy Devries Fund
Rebecca Mackay
The Giustra Foundation
The Highbury Foundation
Wubs Family Foundation

Champion

\$15,000 +

First Majestic Silver Corp.
Inform Interiors and Bensen
Kathryn Dunstan
LivingSpace Interiors
Lorne & Raechelle Paperny
Mark & Naudia Mache
Martha Lou Henley Charitable Foundation
Nicola Wealth Private Giving Foundation
Organika
Osler, Hoskin & Harcourt LLP
Stoops Design
System One Floor Solutions Inc.

Contributor

\$10,000 +

A.E. and Deanna Turton Charitable Foundation
Anonymous Fund, held at Vancouver Foundation
Beedie Development
Bradshaw Family
Brianna Munro
Bright Futures Education Fund, held at Vancouver Foundation
Burgundy Asset Management
CW Asia Fund Foundation
Feelunified
Jill Lyall
Johnson Global Medical Products Inc.
Kevin Kruk & Shelley Poitras
McCarthy Tétrault LLP
Northland Properties Corporation
Odlum Brown Limited
Randall Foundation
Tom & Brittney Gaglardi

Supporter

\$5,000 +

Above 90 Lighting Inc.
Acuitas Therapeutics, Inc.
Angela Huck
Anna Hutfield
Anthem Properties
Bob and Helen Coleman Philanthropic Fund
Canreal Management Corporation
Cassels Brock & Blackwell LLP
CIBC
Connie McGinley
Deanne Schweitzer Foundation
Garry Zlotnik
Guardian Partners Inc.
Jane Justice
Jill Diamond
Linde Equity Inc.
LRJ Charitable Foundation
Maggie & Terry Phang Foundation
Michael R Benna
MNP LLP
Moe's Home Collection
Pacific Plastic Surgery
Patrick & Vandana Lecky
Pippa Morgan
Quesnel Foundation
Rhea and Jonathan Dubois-Phillips
Richards Buell Sutton LLP
Schellenberg Family Fund
Sheila Colman
SmartSweets
Stikeman Elliott
Summer Wilson
Suzy Weeks and David Reed Family
The Cross Décor & Design
Todd Martin
Tony and Becca Kalla
Tracey McVicar
Turnabout
Vanessa Watters
Wheaton Precious Metals Corp.

Looking Ahead to 2026

In 2026, Cause We Care will continue to deepen investment in economic security pathways for single mothers, strengthen multi-year partnerships with frontline organizations, and expand outcome measurements across all grant streams. As demand continues to rise, disciplined growth and strong donor stewardship will remain central to our approach.



Acknowledgements & Thank You

A heartfelt thank you to our generous donors and volunteers who have supported the work of Cause We Care this past year.

BOARD OF DIRECTORS

Andrea Thomas Hill, Founder and Chair
Jennifer Archer
Nicole Comey
Joanna Cameron
Emily Davies
Rhea Dubois-Phillips
Anita Ghatak
Nancy Hill
Vandana Varshney Lecky

STAFF

Shannon Newman-Bennett, Executive Director
Caroline Woodcock, General Manager
Valerie Dib, Administrative Assistant

FUNDRAISING, EVENTS & COMMUNICATION COMMITTEE MEMBERS

Jessie Bobinski
Melissa Bonetti
Shea Baker
Ashley Duyker
Annabel Hawksworth
Stacey Kape
Sandy Lavigne
Patrizia Leone-Mitchell
Libby Shumka
Amanda Solomon-Guthrie
Vanessa Watters

Single mothers deserve more.

Only 1.9% of global philanthropic funding supports women and girls.
A fraction of that reaches single mothers.

Impact Report 2025

408 - 611 Alexander St. Vancouver, BC V6A 1E1
T - (604) 222 1997 E - info@causewecare.org
www.causewecare.org
@causewecarefoundation